



jordan fishwick

Tabley Road

£1,350 PCM



Tabley Road, Wilmslow, SK9 3RZ £1,350 PCM



The Property

AVAILABLE LATE MARCH UNFURNISHED - VIEWING ESSENTIAL TO APPRECIATE
Three-bedroom end terrace located on this popular estate only a short drive to Manchester Airport and within walking distance of Handforth village and the train station.
This property is a MUST SEE having been refurbished to an excellent standard throughout including modern kitchen and bathroom.
Entrance porch, entrance hall with storage with space for vented dryer, spacious lounge with french doors to rear garden, modern fitted kitchen with gas hob and electric oven, fridge freezer, space for washing machine and dishwasher and door to rear garden.
To the first floor two double bedrooms and good-sized single bedroom, bathroom with shower over bath. Off road parking for up to 3 cars. Gardens to 3 sides
Contact Wilmslow 01625 536300 £1350.00pcm
COUNCIL TAX B
EPC D

Directions

SK9 3RZ



- THREE BEDROOMS
- OFF ROAD PARKING
- POPULAR LOCATION
- MODERN KITCHEN AND BATHROOM
- ENCLOSED GARDENS
- COUNCIL TAX B
- EPC D

Postcode - SK9 3RZ

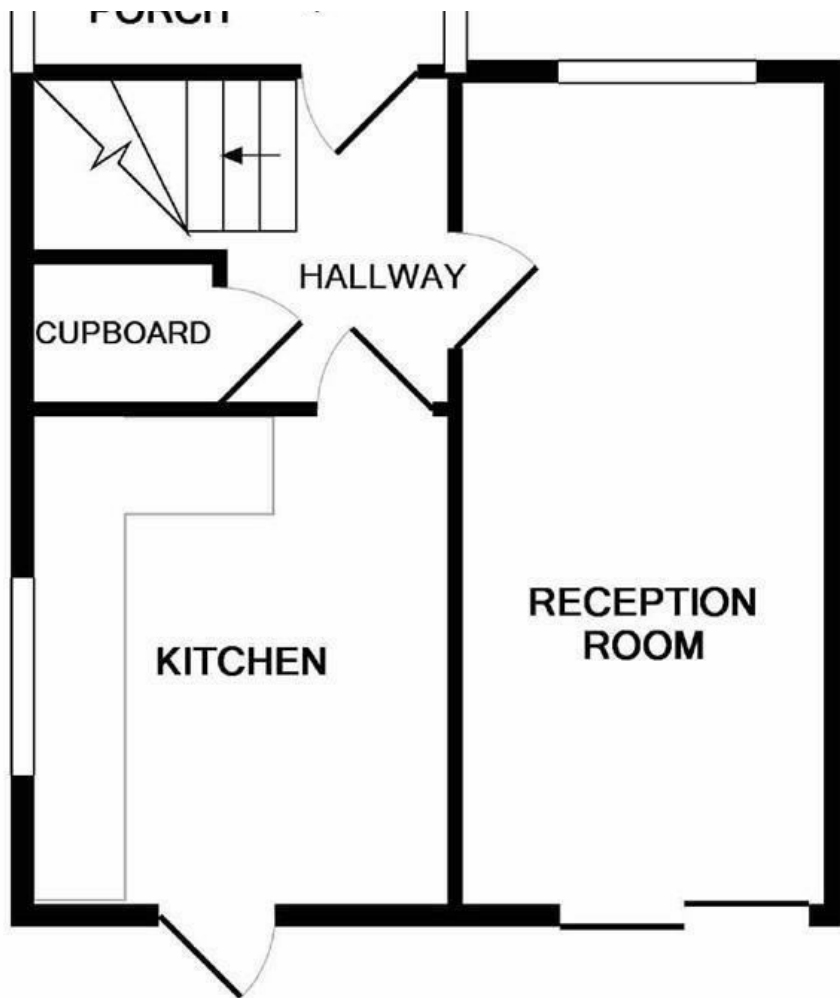
EPC Rating - D

Floor Area - sq ft

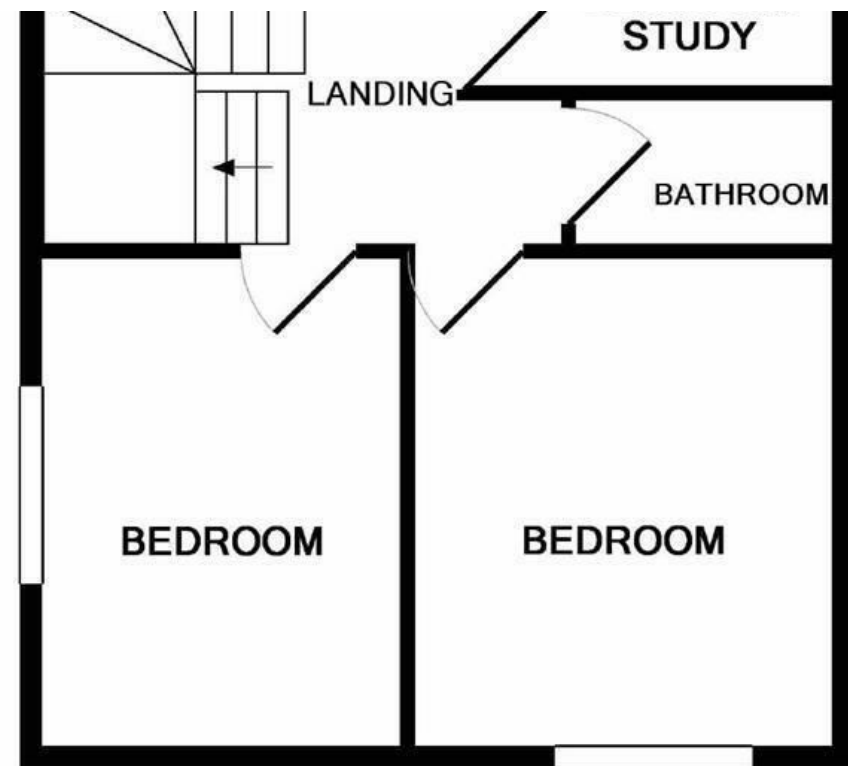
Local Authority - Cheshire East

Council Tax - B





GROUND FLOOR



1ST FLOOR



These particulars are believed to be accurate but they are not guaranteed and do not form a contract. Neither Jordan Fishwick nor the vendor or lessor accept any responsibility in respect of these particulars, which are not intended to be statements or representations of fact and any intending purchaser or lessee must satisfy himself by inspection or otherwise as to the correctness of each of the statements contained in these particulars. Any floorplans on this brochure are for illustrative purposes only and are not necessarily to scale.

Offices at: Chorlton, Didsbury, Disley, Hale, Glossop, Macclesfield, Manchester Deansgate, Manchester Whitworth Street, New Mills, Sale, Wilmslow and Withington

01625 536300